

Chrysler Interface

Specification & Setup Guide

Contents

- 3 Welcome**
 - What' in the box?
- 4 Main Spec**
- 5 About Interface**
 - Dimension
 - External Appearance
- 6 Connector Pin Assignment**
- 8 DIP S/W Setting**
- 9 Installation Guide**
- 11 Contact us**

Welcome

Thank you for purchasing the Chrysler Interface. Read this guide to get started using it.

What's in the box?



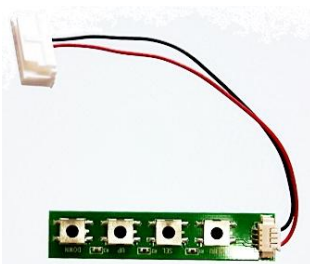
Chrysler I/F : 1 PCS

POWER CABLE : 1EA

A/V CABLE : 1EA

Sub board & CABLE : 1EA

Option Parts



OSD CONTROLLER

Main Spec.

1. Input Spec. (MULTIMEDIA VIDEO INTERFACE)

- 1 x Analog R.G.B (Sync on Green)
- 1 x CVBS (REAR CAMERA) Input. (Rear camera source)
- 1 x Touch Screen
- 3 x A/V (NTSC & PAL) Input

2. Output Spec.

- 2 x CVBS Output (Video Out for Installing Headrest Monitor)
- 1 x AUDIO Output
- 1 x LCD Output (LCD Operation)
- 1 x Touch Screen

3. Electric Power Consumption

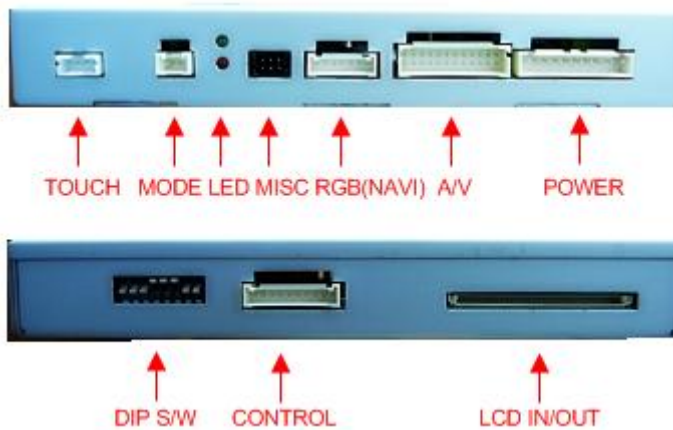
- Input Power : 8VDC ~ 24VDC
- Consumption Power : 12WATT, Max

4. Switch Input mode

- Possible to skip AV source while switching mode (AV source) by DIP S/W
- By Toggle Switch (Option)
- By button on the steering wheel in the car via CAN
- Change Mode Button.
(Push 1~2 sec. steering wheel volume down button)

About Interface

- Dimension
- External Appearance



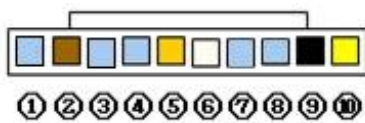
Connector Pin Assignment

RGB(NAVI) Connector



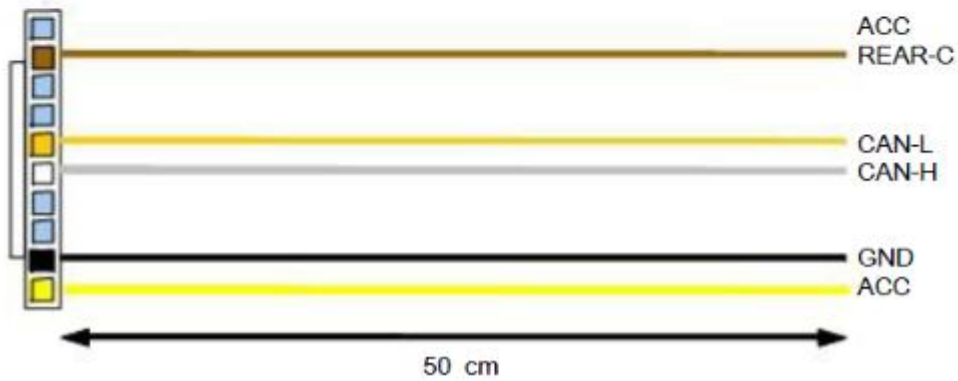
1. B DATA (BLUE)
2. G DATA (GREEN)
3. R DATA (RED)
4. SYNC (YELLOW)
5. GND (BLACK)
6. N.C
7. N.C

POWER Connector



1. N.C
2. REAR - C (BROWN)
3. N.C
4. N.C
5. CAN - L (ORANGE)
6. CAN - H (WHITE)
7. N.C
8. N.C
9. GND (BLACK)
10. ACC (YELLOW)

Connector Pin Assignment







DIP S/W Setting

※ ON : DOWN , OFF : UP

PIN	FUNCTION	DIP S/W Selection
1	RGB(NAVI) Mode	ON : NAVI Display OFF : Skipping NAVI
2	A/V 1 Mode	ON : A/V 1 Display OFF : Skipping A/V 1
3	A/V 2 Mode	ON : A/V 2 Display OFF : Skipping A/V 2
4	A/V 3 Mode	ON : A/V 3 Display OFF : Skipping A/V 3
5	Camera Selection	ON : OEM Camera Select OFF : External Camera Installed
6	CAN Selection	ON : Dodge Setting OFF : Chrysler & Jeep Setting
7	Rear Mode	ON : Camera Setting (External & OEM Camera) OFF : Camera unused
8	Year Mode	ON : 2010 Chrysler OFF : ~2009 Chrysler

※ Example

<p>Chrysler & Jeep NAVI , AV1, AV2 , User Camera</p> 	<p>Chrysler & Jeep NAVI , AV1 , AV2 , OEM Camera</p> 
<p>Dodge NAVI , AV1 , AV2 , User Camera</p> 	<p>Chrysler & Jeep NAVI , AV1 , AV2 , No Camera</p> 

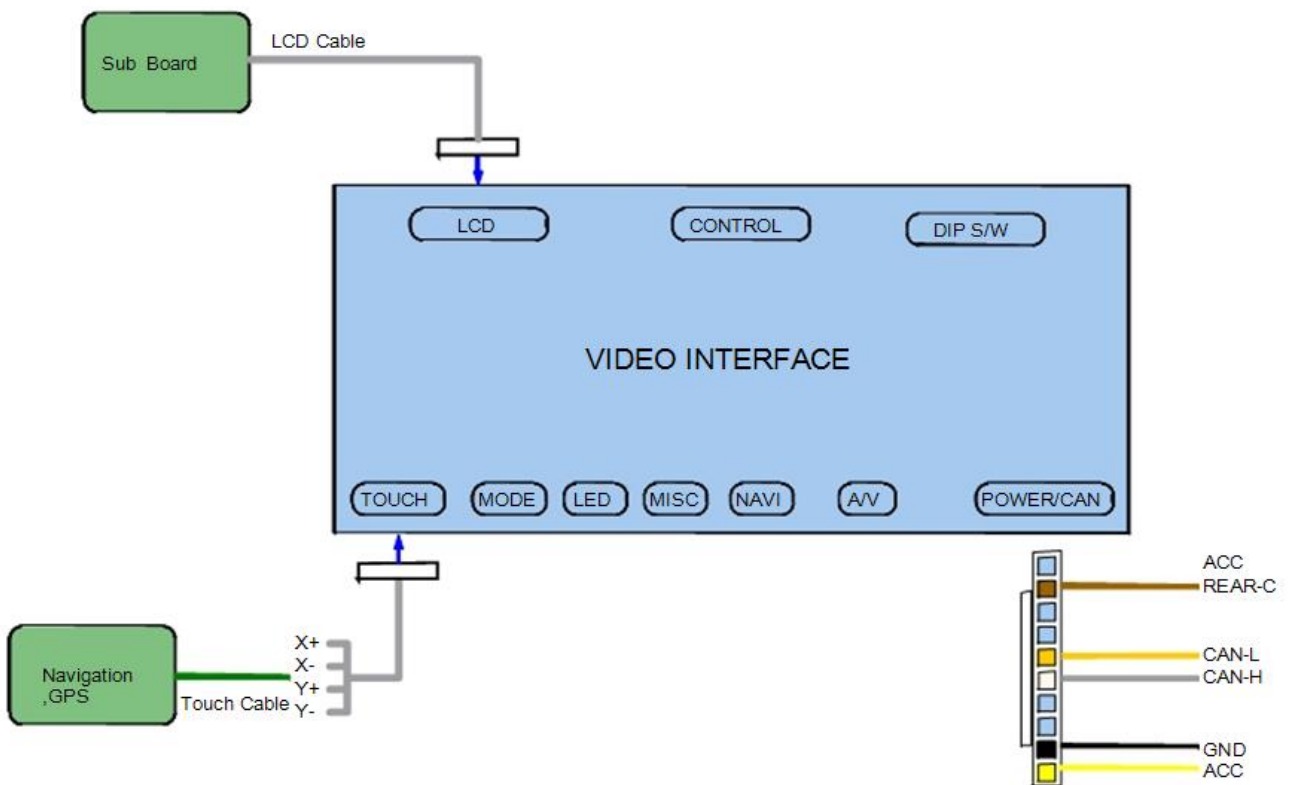
Installation

Guide

Precaution

- You must keep the car key taken off from the car while you work this and finally, connect power of the interface.
- When to connect the interface cable, you must keep the power cable taken off.
- You must work this at the environment without any static electricity or damages.
- All of process on this installation should be done by professionals.
- You must not break the labels attached on the board, if it's broken, no warranty.
- When you receive this package you have to check whether there's any parts not included and you have to contact us right away.
- Our repair service do not accept any problems caused by user's any fault or carelessness.

Installation Guide

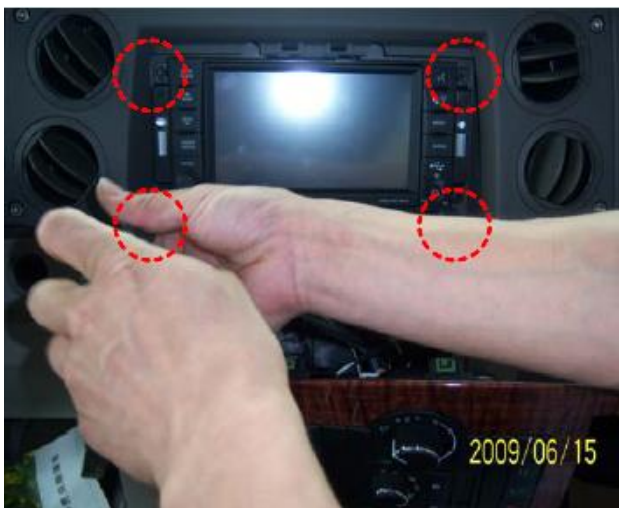


Installation Guide

1) Separate Monitor



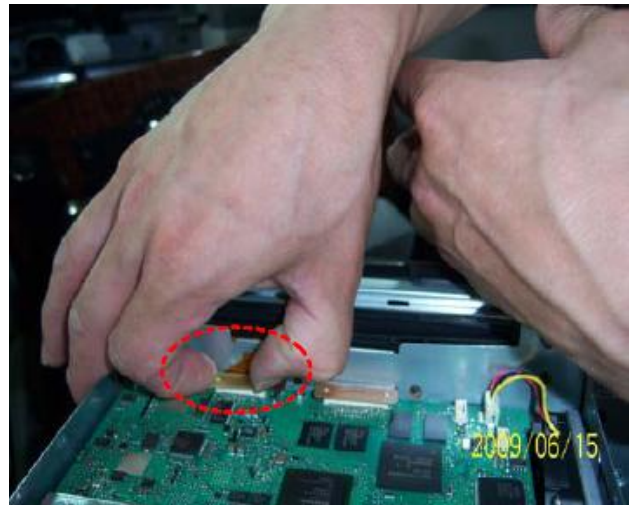
Separate Monitor panel



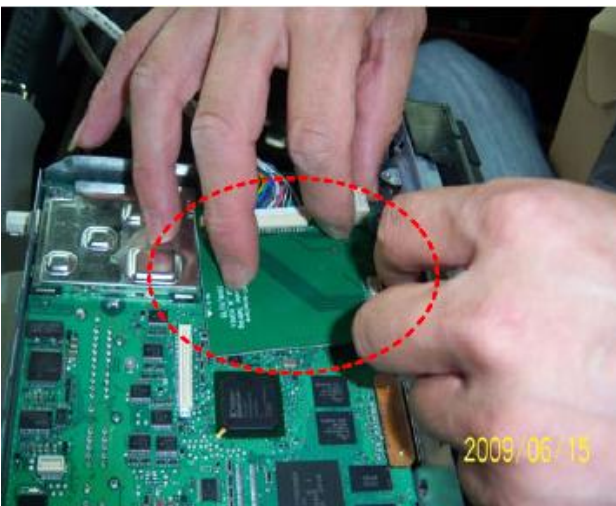
Loosen screws and pull out Monitor Deck (Comand)

Installation Guide

2) Sub Board Installation



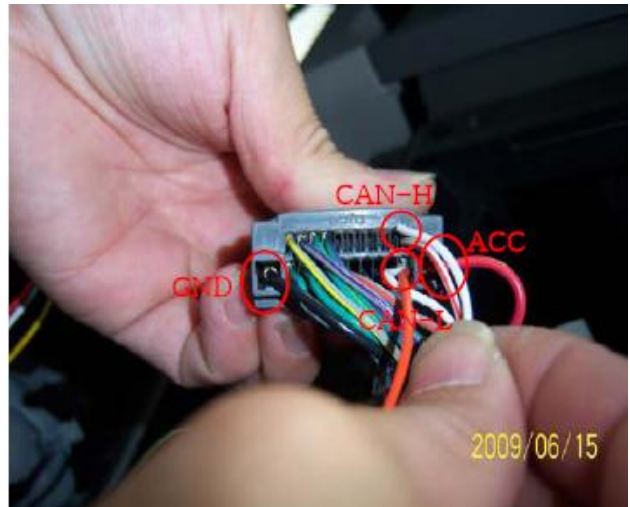
Loosen screws with case and separate LCD connector for install sub-board



Install sub-board and tuck in bulge

Installation Guide

3) ACC & CAN Cable



Connect power cable's ACC, GND, CAN-HI, CAN-LOW
as like photo